

ISOFLEX MOUNT DATA SHEET - CM10

CM10 - YEL

| Resilient Core Type | |
|---------------------------------|--------|
| YEL | Yellow |
| RED | Red |
| BLK | Black |
| Other duro available on request | |

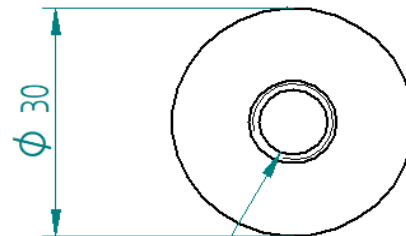


SPECIFICATION:

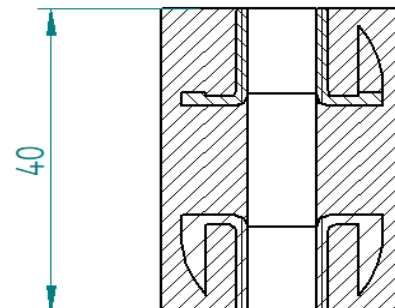
| Dimensions | Metric (mm) | Imperial (in) |
|---------------|-------------|---------------|
| Diameter | 30 | 1.18 |
| Height | 40 | 1.57 |
| Bolt diameter | M10 | M10 |

| Weight | Metric (kg) | Imperial (lb) |
|--------|-------------|---------------|
| CM10 | 0.04 | 0.09 |

| Recommended working load per mount | Metric (kg) | Imperial (lb) |
|------------------------------------|-------------|---------------|
| CM10-YEL | 1-30 | 2-66 |
| CM10-RED | 15-50 | 33-110 |
| CM10-BLK | 40-80 | 88-176 |

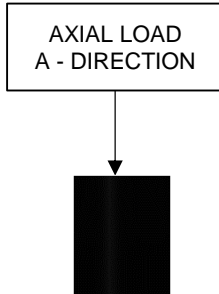


M10 Threaded Insert

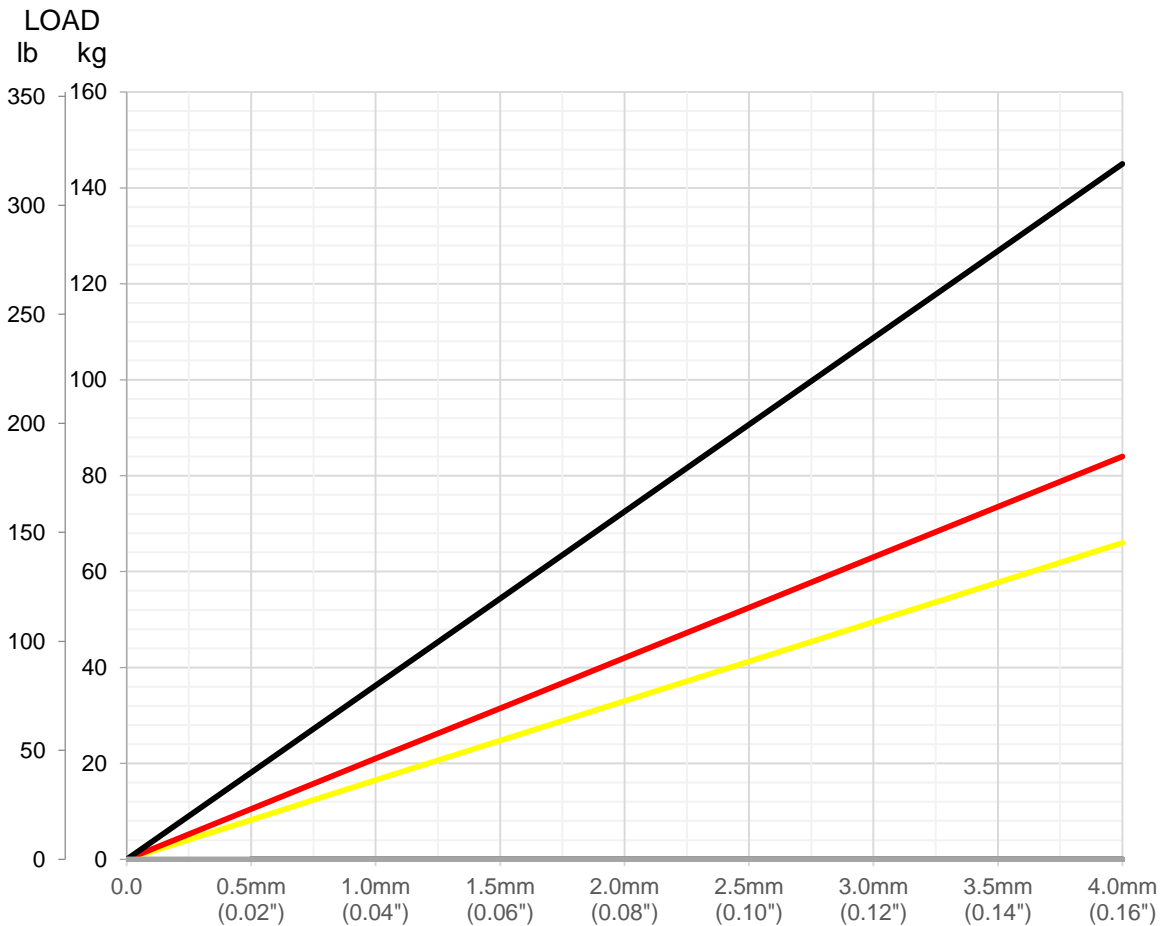


ISOFLEX MOUNT DATA SHEET - CM8

Loading Type: Axial - Vertical Down (A-direction)



| Resilient Core Colour | Spring Rate at 2mm | |
|-----------------------|--------------------|---------|
| | (kg/cm) | (lb/in) |
| Yellow | 165 | 925 |
| Red | 210 | 1175 |
| Black | 365 | 2045 |



Graph: Static Axial Vertical Load [kg] (lb) versus Deflection [mm] (in)